

Edit (trim) Movies!

How to trim unnecessary scenes in captured movies

Preparation

Before starting

- Capture movies using “ImageMixer”.

1

Starting Movie Editing Environment

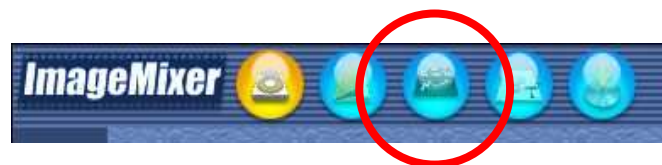
Start “ImageMixer” and click the [Movie Editing Environment] button in the Main Selector.



[Movie Editing Environment] button



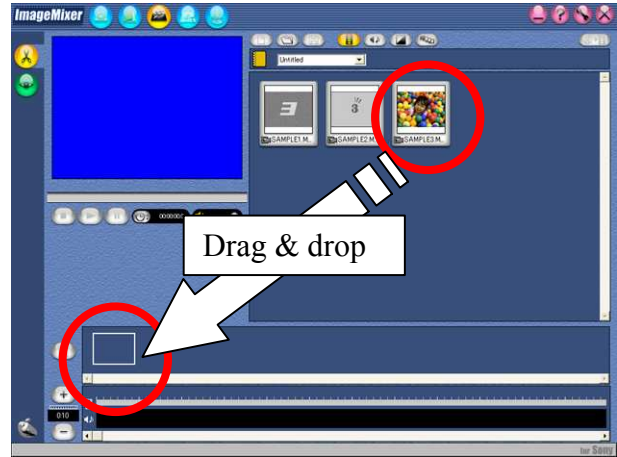
When “ImageMixer” has already been started and you are on a different environment, click the [Movie Editing Environment] button in the Selector Bar on the top left of the screen.



2

Arranging movies onto the Storyboard

Drag & drop movies onto the Storyboard.

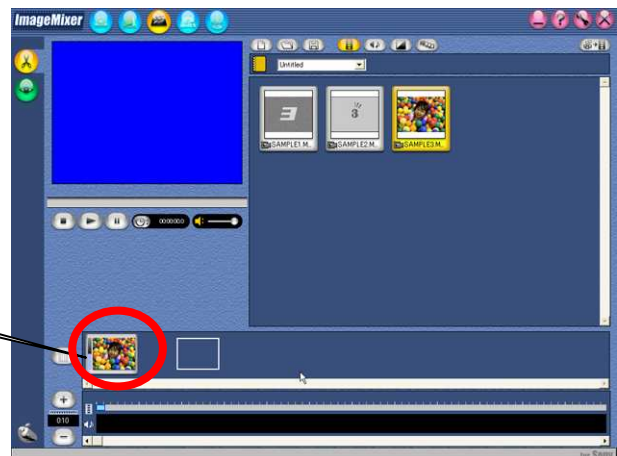


3

Displaying Movie Editor window

Double-click the movie placed on the Storyboard.

Double-click



4

Setting start point

Set the start point for necessary scene of the movie. Click the [Play] button and then click the [Pause] button to stop at the start point.



[Play] button



[Pause] button

【 Reference 】

Fine adjustment of start point can be done by the [Single Increment Rewind]/[Single Increment Advance] button. The duration for rewind/advance can be set by Incrementation Selector.



Click the [In-point] button.



[In-point] button

【 Reference 】

- To alter start point, follow step 4 to 5 again.
- The scene from in-point to out-point(to be set in the following steps) remains and other scene is excluded.



Click to define in-point at the current position.

6

Setting end point

Set the end point for necessary scene of the movie. Click the [Play] button and then click the [Pause] button to stop at the end point.



[Play] button



[Pause] button

【 Reference 】

Fine adjustment of end point can be done by the [Single Increment Rewind]/[Single Increment Advance] button. The duration for rewind/advance can be set by Incrementation Selector.



7

Setting the out-point

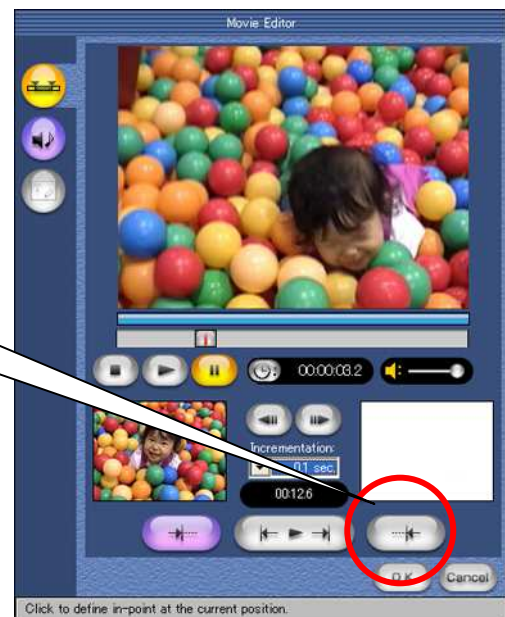
Click the [Out-point] button.



[Out-point] button

【 Reference 】

- To alter end point, follow step 6 to 7 again.
- The scene from in-point (set in the previous steps) to out-point remains and other scene is excluded.



Click to define in-point at the current position.

8

Confirming trimmed range

Confirm the image of start and end point.

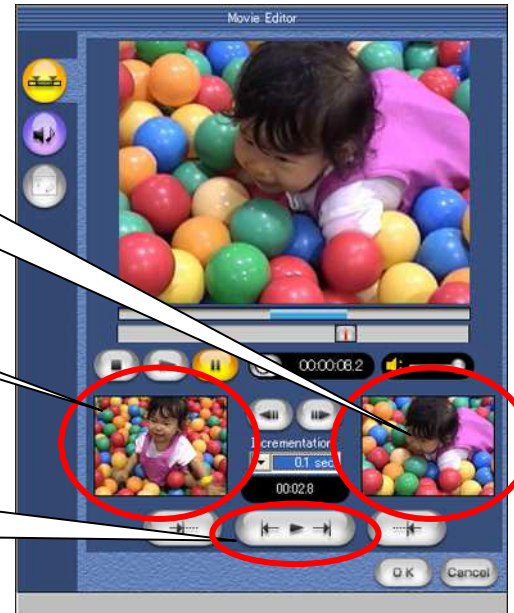
Image at the end point

Image at the start point

Click the [Trimmed Range Preview] button to confirm trimmed range.



[Trimmed Range Preview] button



The movie from start point to end point is played.

9

Fixing trimming range

Click the [OK] button.



[OK] button

Closes Movie Editor window and returns to Movie Editing Environment.



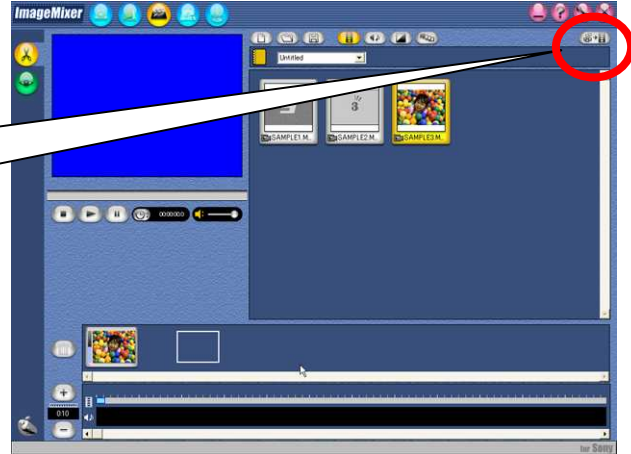
10

Save

Click the [Generate Move] button.



[Generate Move]
button

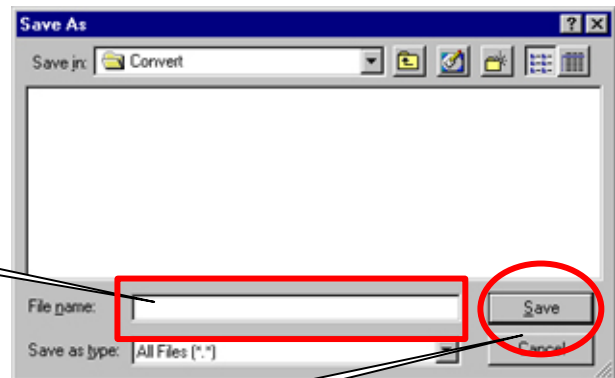


11

Entering the file name

Enter the name of trimmed movie at the [File name] box in the [Save As] window.

Enter file name.



Click the [Save] button after entering file name.

Save

[Save] button

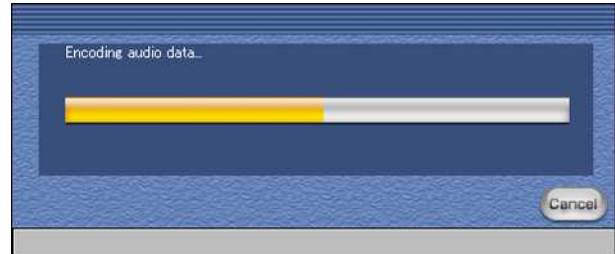
【 Reference 】

Trimmed movies cannot be saved directly to CD-R and DVD-R.

12

Finish

Starts Encoding.



When encoding is finished, trimmed movie is automatically registered in the Album.

